



Welcome Kampers,

We are looking forward to your stay at Kamp Kontent! Check in time is typically around 2-3pm. If you plan to arrive much earlier or later than the time specified above, please contact us in advance to schedule your check in time.

Please see the guideline below for a few helpful tips and things to remember about your visit including where to park and what to bring. We hope your **stay** at Kamp Kontent is **relaxing** and **enjoyable**! Don't hesitate to contact us with any questions or concerns before, during or after your visit.

Sincerely,

Leah & Julie Donlon-Yates, Co-Owners  
Kamp Kontent Properties  
"Stay, relax, enjoy!"  
<http://www.kampkontent.com>  
(585) 214-9040

# Kamp Kontent Guidelines

## How to Get Here...

- Main Kamp Address: 4068 West Lake Road, Geneseo, NY 14454.
- Tree House Address: 4090 West Lake Road, Geneseo, NY 14454.
- Any GPS, SmartPhone or online map website such as MapQuest will provide good directions. See local directions below for specifics.

### *Local Directions:*

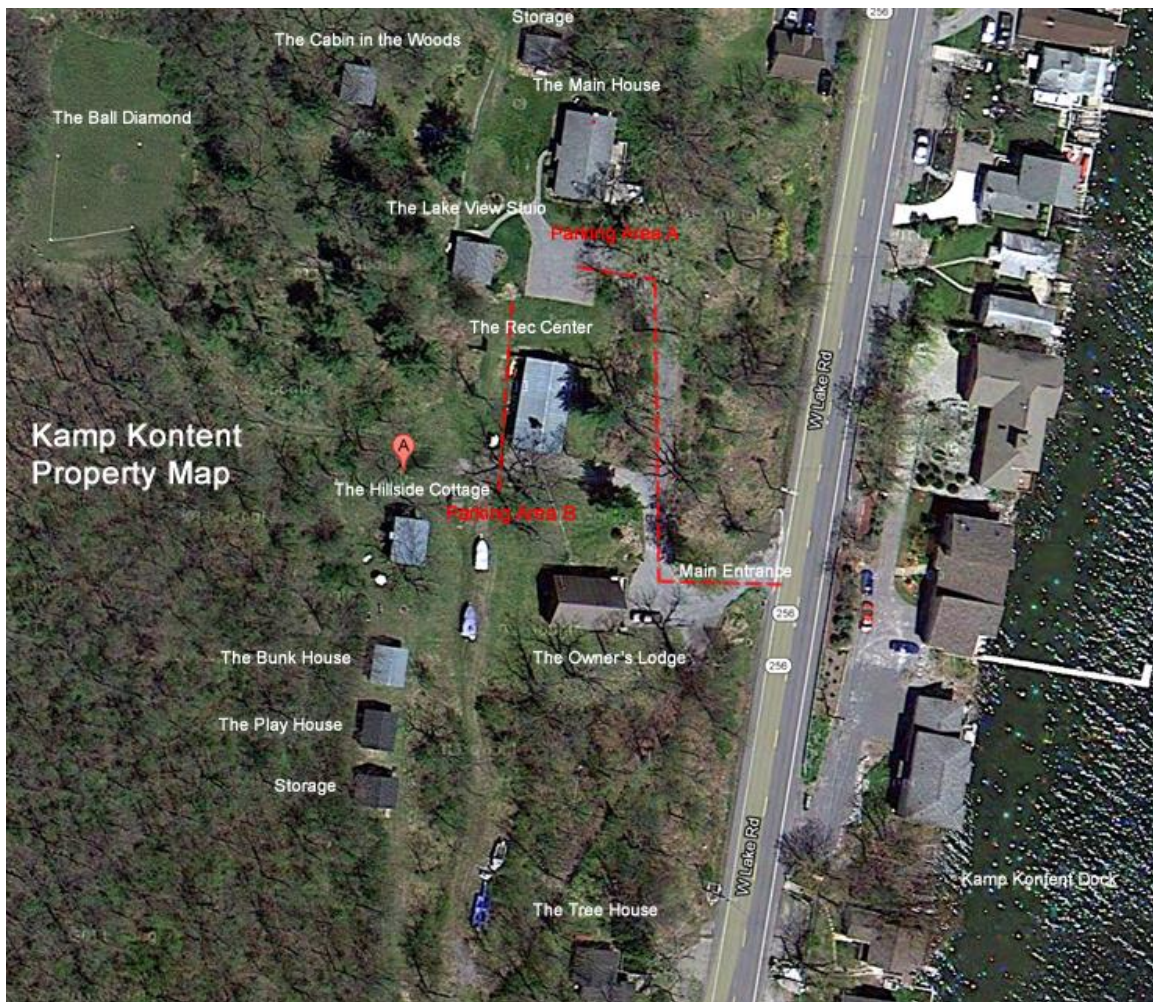
- Take 390 to exit 9 (Lakeville).
- Follow Rt. 15 South towards Livonia / Lakeville.
- At the fork in the road, bear right onto Rt 256.
- Follow 256 into Lakeville.
- Go straight at the traffic light. 256 will become West Lake Road.
- After passing Deer Run Winery on your right, look for a green sign that says "Sleggs Landing" on the right.
- The second driveway on the right after that sign is 4068, 4076 & 4084 West Lake Road. This is the main entrance to Kamp Kontent.
- The driveway to The Main House is immediately to the right, 4068 West Lake Road.
- If you are staying in The Tree House, go past the main entrance and turn right at the next driveway, 4090 West Lake Road.

## How to Check In...

- When you arrive, a Kamp Kontent staff member will usually be there to greet you and check you in.
- If you don't see anyone around, please call or text us at (585) 214-9040 or message via AirBnB (if you booked through that site).
- Typically the cottage / cabins will be unlocked for you with a key on a table in the dining room or main living area.

## Where to Park...

- For The Main House, The Lake View Studio or The Cabin in the Woods, park in Parking Area A (see map below).
- For The Hillside Cottage or The Bunk House, park in Parking Area B (see map below).
- For The Tree House, park in the lot at 4090 West Lake Road.



### What to Bring...

- Linens
- Towels
- Blankets / Sleeping Bags / Pillows
- Toiletries
- Disposable Kitchen Supplies (ie. paper plates, napkins, etc)
- Cleaning Supplies (ie. windex, soap, laundry detergent, etc)
- Food and beverages
- Charcoal (for cabin grills)

### Don't Worry About Bringing...

(These items are already included at Kamp Kontent)

- Gas Grill (Main House)
- Charcoal Grill (Cabins)
- Vacuum Cleaner

- Reusable Kitchenware & Appliances (ie. plates, bowls, pots, pans, silverware, coffee maker, etc)

## **Things to Do and See...**

### *Activities at Kamp Kontent*

- Swimming, fishing, sun bathing – follow signs down to the Kamp Kontent dock
- Boating – a dock slip is available upon request
- Kayaking – two kayaks are available for use upon request
- Biking – two mountain bikes available for use upon request
- Hiking – nature trails can be found throughout the Kamp
- Recreation Center – see Kamp staff for availability

### *Local Restaurants / Bars*

- The North Shore Grill – located on the North end of the lake
- The Beach Comber – located near the South West end of the lake
- Ember – located in Livonia, a short drive away

### *Other Local Attractions*

- Vitale Park (live concerts every Sunday) – located in Lakeville on the North end of the lake
- Minnehan's Mini Golf / Arcade – located in Lakeville, < 3 mi from Kamp
- Deer Run Winery – located on West Lake Road, < 1 mi from Kamp
- The Vintage Drive-In Theatre – located in Avon, < 10 mi from Kamp
- Indoor / Outdoor Flea Market – located in Avon, < 10 mi from Kamp

## **Kamp Rules & Regulations...**

- Smoking is prohibited inside any building
- Pets must be kept on a leash and/or well attended
- Please dispose of garbage and recycling in the designated bins
- Rec Center hours are 9:00am – 9:00pm (shut off lights and close main door when you leave)
- Quiet hours are 10:00pm – 6:00am (keep in mind neighbors and other campers)

## **How to Check Out...**

- Please leave the cabin in the condition you found it and leave the key on the table in the main living area.